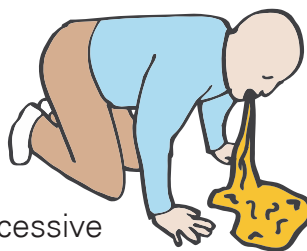
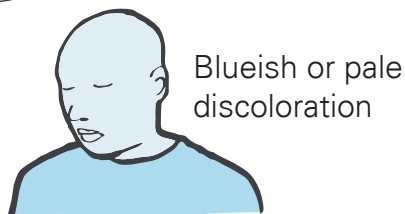
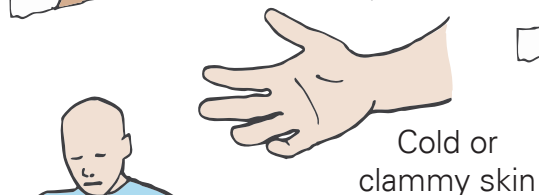
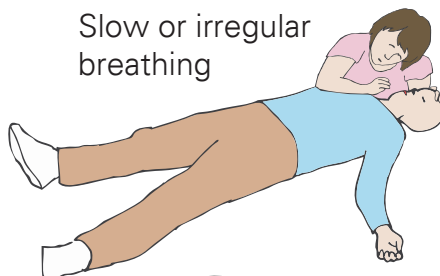
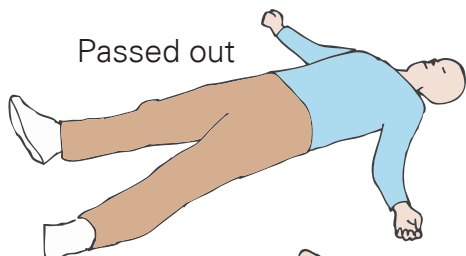


Signs of Alcohol Overdose

If you see ANY of these signs, seek help immediately.



For emergency help, CALL

911

or **515-294-4428**
(ISU Police Non-Emergency Number)

Contact police immediately. When officers arrive, their most immediate concern is providing medical attention to those in need.

#1 Turn person onto side.



#2

Stay with person until help arrives.



CycloneHealth.org/Prevention

#saferstate     